

Halifax Area

© Metro, WYCA
Digital Cartography by Lovell Johns Ltd 02.10.2025
This map is based upon Ordnance Survey material with the permission of Ordnance Survey on behalf of the Controller of His Majesty's Stationery Office © Crown copyright. Unauthorised reproduction infringes Crown copyright and may lead to prosecution or civil proceedings. 100020521 2025.



SCALE 1 mile

Calderdale

Frequent service operates every 15 minutes or better Mon to Sat daytime **501**
Regular service operates at least one bus every 2 hours, 6 days a week **571**
Infrequent service operates at certain times of the day, or days of the week, only **688**
Terminal point *** 534**
One-way operation of bus

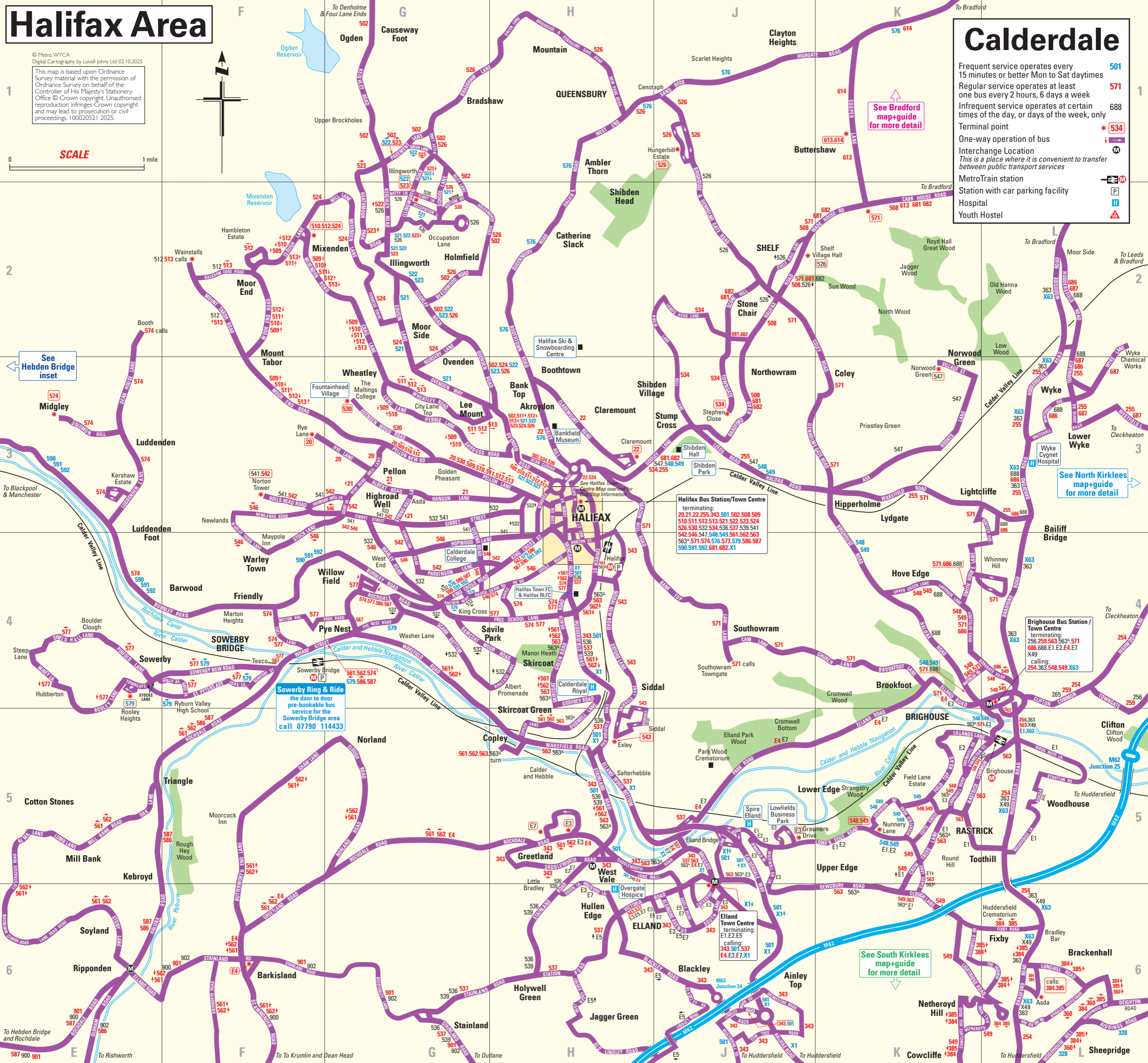
Interchange Location
This is a place where it is convenient to transfer between public transport services

MetroTrain station

Station with car parking facility

Hospital

Youth Hostel



See Hebden Bridge inset

See Bradford map+guide for more detail

See North Kirklees map+guide for more detail

Halifax Bus Station/Town Centre
terminating:
20.21.22.25.34.35.501.502.508.509
510.511.512.513.521.522.523.524
526.530.532.534.536.537.539.541
542.546.547.548.549.561.562.563
563*.571.574.576.577.579.586.587
590.591.592.681.682.X1

Sowerby Ring & Ride
the door to door pre-bookable bus service for the Sowerby Bridge area
call 07790 114433

Brighouse Bus Station / Town Centre
terminating:
256.259.563.563*.571
686.688.E1.E2.E4.E7
X49
calling:
254.363.548.549.X63

Elland Town Centre
terminating:
E1.E2.E5
calling:
343.501.537
E4.E3.E7.X1

See South Kirklees map+guide for more detail

calls: 384.385